



MAYR MELNHOF HOLZ

MAYR-MELNHOF HOLZ HOLDING AG

WHERE
IDEAS
CAN
GROW.

www.mm-holz.com

ADDING VALUE IN TIMBER



FOREST



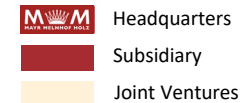
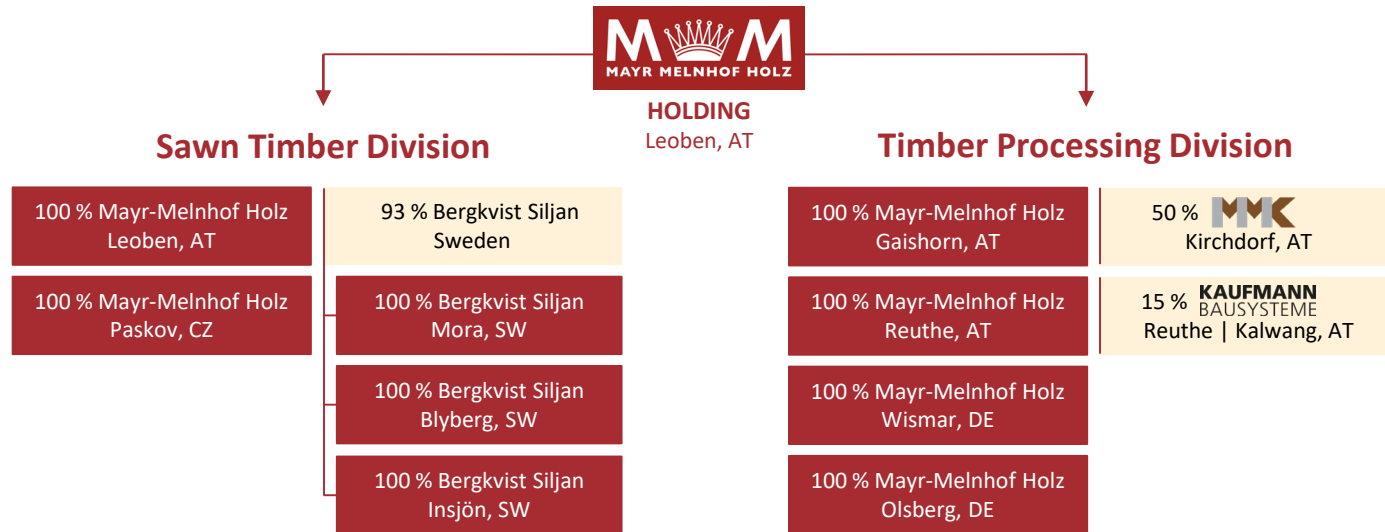
TIMBER



SYSTEMS



GROUP STRUCTURE





LOCATIONS



**Bergkvist Siljan
Mora**
Sawmill

**Bergkvist Siljan
Skog**
Loc procurement



**Bergkvist Siljan
Blyberg**
Sawmill



**Bergkvist Siljan
Insjön**
Sawmill



**Mayr-Melnhof Holz
Wismar**
Timber processing



**Mayr-Melnhof Holz
Paskov**
Sawmill, Pellets production



**Mayr-Melnhof Holz
Olsberg**
Timber processing



**Mayr-Melnhof Holz
Reutte**
Timber processing, Pellets production



Germany

Czech Republic

Austria

Sweden



**Mayr-Melnhof Holz
Gaißhorn am See**
Timber processing



**Mayr-Melnhof Holz
Leoben**
Sawmill, Pellets production,
Timber processing

HISTORY



1850

1951

2001

2004

2007

Company
foundation

Concentration of
saw milling
activities in
Leoben (AT)

Acquisition of the
laminated beams
manufacturer
Systemholz AG,
today part of
Mayr-Melnhof Holz
Gaishorn (AT)

Initial operation of
the sawmill
Mayr-Melnhof Holz
Paskov (CZ)

Initial operation of
the pellet plant in
in Paskov (CZ)

HISTORY



2008

2009

2012

2015/2016

2017

Acquisition of the Stallinger/Kaufmann Group, today Mayr-Melnhof Holz Reuthe (AT)

Initial operation of cross laminated timber production in Gaishorn (AT)

Initial operation of the sawmill Mayr-Melnhof Holz Efimovskij (RU)

Acquisition of the pellet plant in Leoben (AT)

Acquisition of the combined heat and power plant in Leoben (AT)

Doubling of the cross-laminated timber capacities in Gaishorn (AT)

40 million Euro investment at the core locations

Initial operation of the pellet plant in Efimovskij (RU)

HISTORY



2018

2021

2022

2023



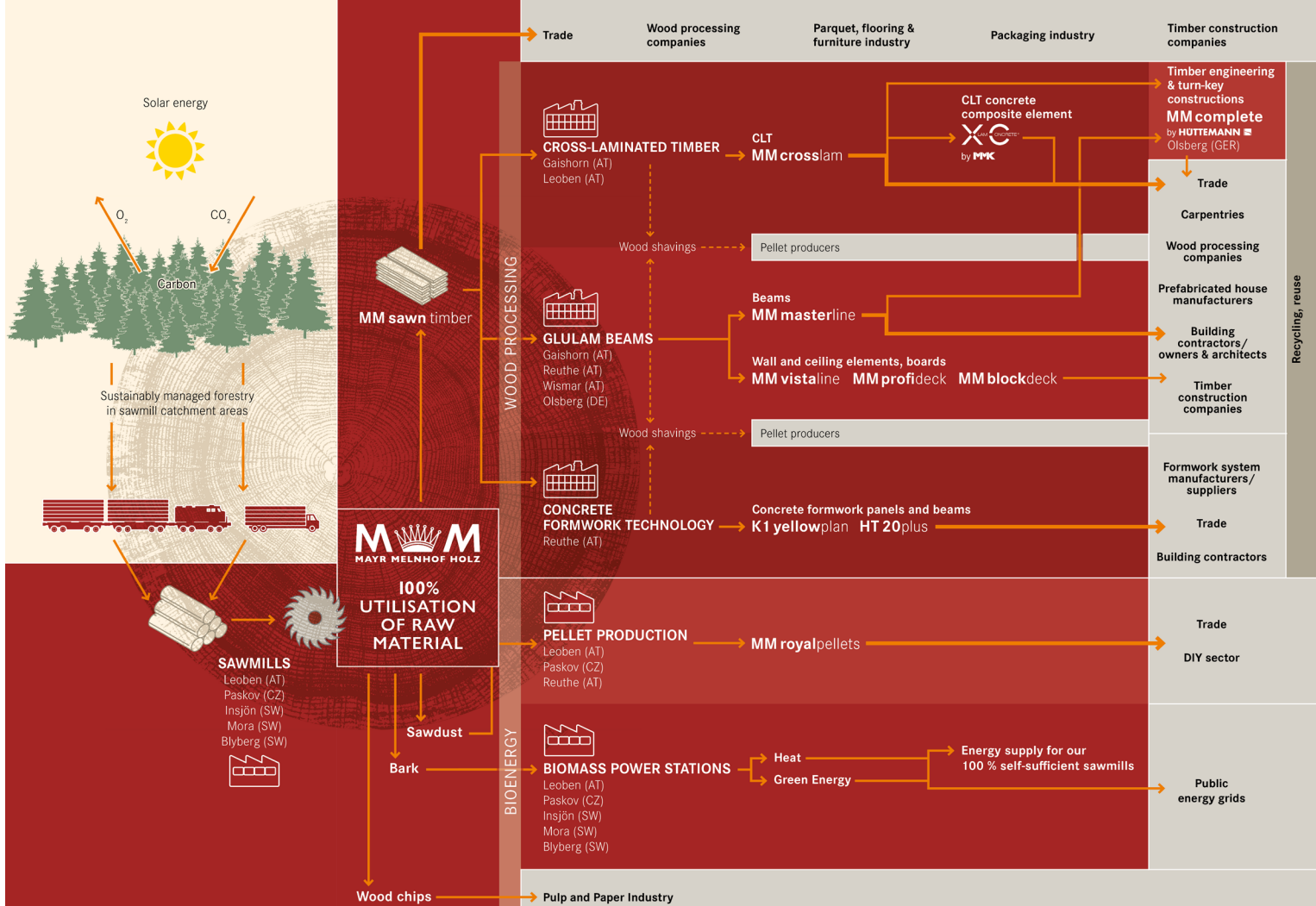
Acquisition of the Hüttemann Group, today Mayr-Melnhof Holz Wismar (DE) & Mayr-Melnhof Holz Olsberg (DE)

Groundbreaking ceremony cross-laminated timber plant Mayr-Melnhof Holz Leoben (AT)

Acquisition of the sawmill group Bergkvist Siljan (SW) with sites in Insjön, Mora, Blyberg
Divestment of Mayr-Melnhof Holz Efimovskij (RU)

Initial operation of the pellet plant in Reuthe (AT)
Initial operation of cross laminated timber production in Leoben (AT)

UTILISATION OF RAW MATERIAL PORTFOLIO & CLIENTS





PRODUCTS

- MM sawn timber
- Glulam beams MM masterline
- Glulam duo- & trio beams MM vistaline
- Glulam ceiling elements MM profideck
- Glulam floor and wall beams MM blockdeck
- Glulam house building element MM HBE
- Cross-laminated timber MM crosslam
- Timber-concrete composite element XC® by MMK
- Timber engineering & turn-key construction MMcomplete by Hüttemann
- Formwork panel KI yellowplan
- Formwork beams HT 20plus
- Pellets MM royalpellets

Chain of Custody



Worldwide Sales MM-TEAM OF EXPERTS & DISTRIBUTION PARTNERS

RAW MATERIAL

Spruce & pine
(fir, larch) from sustainably managed forests



Foundation **1850**

Headquarters
Mayr-Melnhof Holz Holding AG
LEOBEN | AT

Owner
Franz-Mayr-Melnhof-Saurau
Industrie Holding GmbH

1685
EMPLOYEES

87 % male
13 % female
2.4 % thereof apprentices



5 Saw mills
Leoben | AT Insjön | SW
Paskov | CZ Mora | SW

Blyberg | SW

3.54 mio cubic meters of log input

2.06 mio cubic meters of sawn timber

200,000 tons of pellets

4 Timber processing plants
Gaishorn | AT Reuthe | AT
Wismar | DE Olsberg | DE

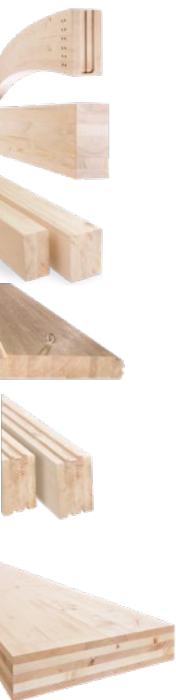
16.5 % Timber processing rate

450,000 cubic meters of timber processing products

2022 TURNOVER

€ 1.06 BN
95 MIO INVESTMENT

PRODUCT PORTFOLIO & PRODUCTION 2022



Product	Production	Production	Product
MM masterline Glulam beams	308,000 m ³	1.20 mio. m ²	K1 yellowplan Formwork panels
MM vista line Duo-/Trio beams		4.80 mio. m ³	HT 20 plus Formwork beams
MM profideck Laminated ceiling elements		2.06 mio. m ³	MM sawn timber
MM blockdeck Floor and wall beams	61,000 m ³	200,000 t	MM royal pellets
MM crosslam Cross-laminated timber			



FACTS & FIGURES 2022



	Turnover in mio. EUR	Employees	Products
Sawn timber division	752	930	Sawn timber Pellets Sawmill by-products
Timber processing division	310	755	Glulam beams Duo/trio/quattro beams Special components Floor and wall beams Laminated ceiling elements Cross-laminated timber (CLT) Formwork timber beams Formwork panels
TOTAL	1,062 consolidated	1,685	

SAWN TIMBER – FACTS & FIGURES 2022



Locations	Leoben (AT), Paskov (CZ), Insörn (SW), Mora (SW), Blyberg (SW)
Input	3.54 mio. m ³ of softwood logs
Sales	2.06 mio. m ³ of sawn timber
Customers	Trade Wood processing companies Parquet, flooring & furniture industry Packaging industry Timber construction companies
Turnover	752 mio. EUR
Employees	930

Acquisition of the Swedish sawmill group Bergkvist Siljan, February 2022



Bergkvist Siljan Insjön,
including the container terminal



Bergkvist Siljan Blyberg



Bergkvist Siljan Mora

TIMBER PROCESSING – FACTS & FIGURES 2021

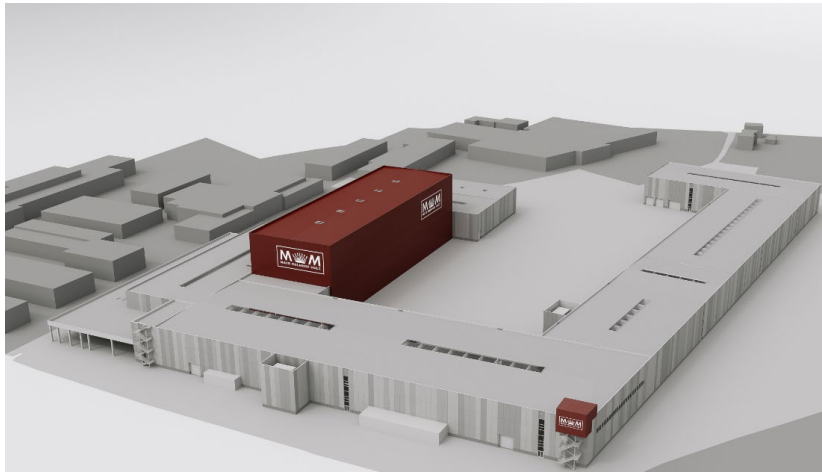


Locations	Gaishorn (AT) Reuthe (AT), Wismar (DE), Olsberg (DE)
Sales	308,000 m ³ glulam beams/special components 61,000 m ³ cross laminated timber 4.80 mio. rm formwork timber beams 1.20 mio. m ² 3-ply-structural panels
Customers	Wood processing companies Carpentries Prefabricated house manufacturers Building contractors / owners & architects Trade Formwork system manufacturers / suppliers
Turnover	310 mio. EUR
Employees	755

INVESTMENTS



Cross-laminated timber plant, high-performance re-sorting & planing mill, and fully automated high-bay warehouse, Leoben (AT)



World's first PEFC project certification for an industrial building of this size: **HFA-PEFC-COC-0776**

INVESTMENTS



Facts: Cross-laminated timber plant, high-performance re-sorting and planing mill, and fully automated high-bay warehouse, Leoben (AT)

Start of construction:	May 31, 2021
Planned production start:	April 2023
Investment volume:	175 mio. EUR in the first stage
Planning performance:	700,000 m ³
Lamella storage capacity:	28,000 m ³
Production capacity:	some 140,000 m ³ of PEFC certified cross-laminated timber once fully operational
Production floor space:	Approx. 33,000 m ²
Green jobs created:	50
Ecological power & heat supply:	Solar power system on the roof, hydro power plant & biomass power stations
Wooden superstructure & fade:	11,500 m ³ of cross-laminated timber, glued laminated timber, 3-ply panels produced in-house
Certification:	PEFC-certified building project: HFA-PEFC-COC-0776

MM royalpellets

MM royalbrüettes

BIOFUELS – FACTS & FIGURES 2022



Locations	Leoben (AT), Paskov (CZ)
Sales MM royalpellets	200,000 t
Customers	Trade DIY sector
Target markets	Central and West Europe



MAYR MELNHOF HOLZ

MAYR-MELNHOF HOLZ HOLDING AG

WHERE
IDEAS
CAN
GROW.

www.mm-holz.com