



MAYR-MELNHOF HOLZ HOLDING AG

WHERE
IDEAS
CAN
GROW.

www.mm-holz.com

INTEGRATED VALUE CREATION



FOREST



TIMBER



SYSTEMS

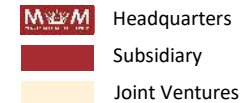
WHERE
IDEAS CAN
GROW.

WOOD.



IS SUSTAINABLE.

GROUP STRUCTURE





LOCATIONS



Bergkvist Siljan Mora*
Sawmill

*Production until March 2026



Bergkvist Siljan Blyberg
Sawmill



Bergkvist Siljan Insjön
Sawmill



Mayr-Melnhof Holz Wismar
Timber processing



Mayr-Melnhof Holz Paskov
Sawmill, Pellets production



Mayr-Melnhof Holz Olsberg
Timber processing



Mayr-Melnhof Holz Reutte
Timber processing , Pellets production



Mayr-Melnhof Holz Gaißhorn am See
Timber processing



Mayr-Melnhof Holz Leoben
Sawmill, Pellets production,
Timber processing

HISTORY



1872

1951

2001

2004

2007

Birth of
Mayr-Melnhof's
timber activities

Concentration of
saw milling
activities in
Leoben (AT)

Acquisition of the
laminated beams
manufacturer
Systemholz AG,
today part of
Mayr-Melnhof Holz
Gaishorn (AT)

Initial operation of
the sawmill
Mayr-Melnhof Holz
Paskov (CZ)

Initial operation of
the pellet plant in
in Paskov (CZ)

HISTORY



2008

2009

2012

2015/2016

2017

Acquisition of the Stallinger/Kaufmann Group, today Mayr-Melnhof Holz Reuthe (AT)

Initial operation of cross laminated timber production in Gaishorn (AT)

Initial operation of the sawmill Mayr-Melnhof Holz Efimovskij (RU)

Acquisition of the pellet plant in Leoben (AT)

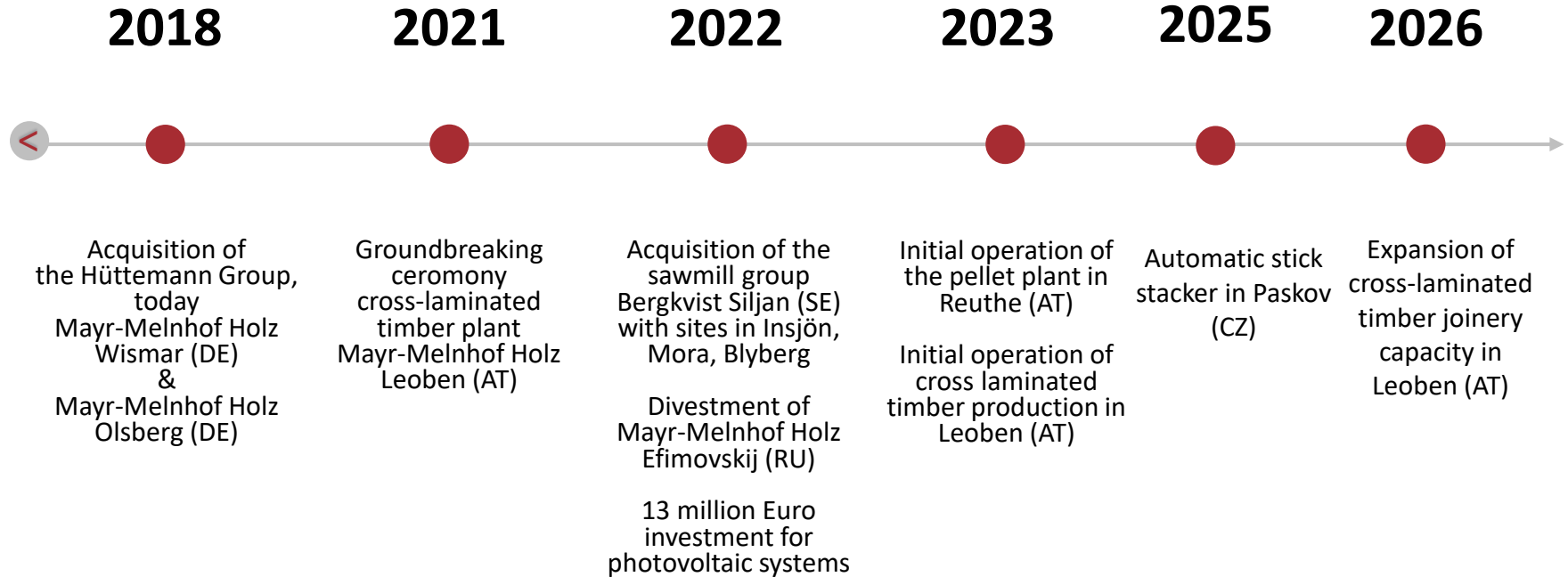
Acquisition of the combined heat and power plant in Leoben (AT)

Doubling of the cross-laminated timber capacities in Gaishorn (AT)

40 million Euro investment at the core locations

Initial operation of the pellet plant in Efimovskij (RU)

HISTORY



PEFC-CERTIFIED



PEFC

PEFC/06-38-79



www.mm-holz.com

SOLAR ENERGY



Oxygen (O) Carbon dioxide (CO₂)

Carbon

Sustainably managed forestry in sawmill catchment areas



SAWMILLS

Carbon remains permanently bound in wood and wood products



100% UTILISATION OF RAW MATERIAL



MM sawn timber

SAWDUST

CROSS-LAMINATED
TIMBER
MM crosslam



TIMBER CONCRETE
COMPOSITE ELEMENT by HMC



GLUED LAMINATED
TIMBER
MM masterline



ENGINEERED GLULAM
FLOOR & WALL BEAMS
CEILING ELEMENTS

MM blockdeck

FORMWORK
BEAMS &
PANELS



HT 20plus

K1 yellowplan

MM vistaline



MM HBE

MM profideck

PELLET PRODUCTION
MM royalpellets



BIOENERGY

TIMBER ENGINEERING &
TURN-KEY CONSTRUCTION
MM complete
by HÜTTEMANN



BIOMASS POWER STATIONS

Heat & Green Energy

Energy supply for our 100% self-sufficient sawmills

WOOD CHIPS

Pulp and Paper Industry

Public energy grids

WHERE
IDEAS
CAN
GROW.

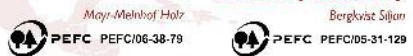
RECYCLING, REUSE



PRODUCTS

- MM sawn timber
- Glulam beams **MM** masterline
- Glulam duo- & trio beams **MM** vistaline
- Glulam ceiling elements **MM** profideck
- Glulam floor and wall beams **MM** blockdeck
- Glulam house building element **MM** HBE
- Cross-laminated timber **MM** crosslam
- Timber-concrete composite element **XC®** by **MMK**
- Timber engineering & turn-key construction **MMcomplete** by **Hüttemann**
- Formwork panel **K1** yellowplan
- Formwork beams **HT 20plus**
- Pellets **MM** royalpellets

Chain of Custody



Worldwide Sales MM-TEAM OF EXPERTS & DISTRIBUTION PARTNERS

RAW MATERIAL

Spruce & pine

(fir, larch) from sustainably managed forests



Foundation **1872**

Headquarters
Mayr-Melnhof Holz Holding AG
LEOBEN | AT

Owner
Franz-Mayr-Melnhof-Saurau
Industrie Holding GmbH

1695
EMPLOYEES

88.7 % male
11.3 % female
thereof 2.4 % apprentices



5 Saw mills
Leoben | AT Insjön | SE Mora* | SE
Paskov | CZ Blyberg | SE

2.95 mio cubic meters of log input

1.73 mio cubic meters of sawn timber

214,000 tons of pellets

5 Timber processing plants
Gaishorn | AT Reuthe | AT Leoben | AT
Wismar | DE Olsberg | DE

26 % Timber processing rate
545,800 cubic meters of timber processing products

2025 TURNOVER

€ 875 MIO
15 MIO INVESTMENT

PRODUCT PORTFOLIO & PRODUCTION 2025



1,730,000 m³
MM sawn timber

MM masterline
Glulam beams



MM blockdeck
Floor and wall beams



120,000 m³
MM crosslam
Cross-laminated timber



335,000 m³

MM profideck
Laminated ceiling elements



1,400,000 m²
K1 yellowplan
Formwork panels



HT 20plus
Formwork beams

5,500,000 lfm



MM vistaline
Duo- & Trio beams



MM HBE
Glulam house building elements

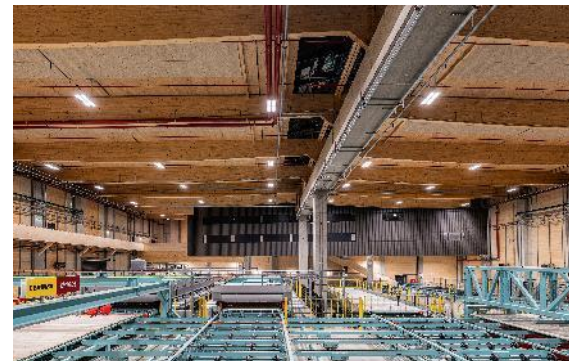
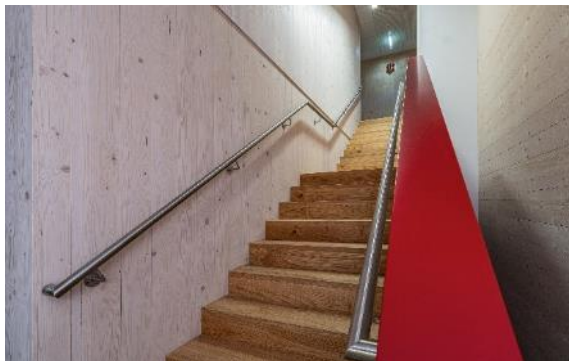


214,000 t
MM royalpellets



REFERENCES

WHERE
IDEAS
CAN
GROW.



FACTS

Start of planning:	October 2019
Start of construction:	May 2021
Completion:	End of 2023
Building owner:	Mayr-Melnhof Holz Leoben
Architect / Planner:	Warnecke Engineering, arinco planungs + consulting gmbh
Timber construction company:	Strobl Bau – Holzbau GmbH

MATERIAL

11.500 m³ **MM crosslam**, **MM multiplan**,
MM masterline and **MM masterline** engineered glulam

Cross-laminated timber plant Leoben | AT



FACTS

Start of planning:	December 2021
Start of construction:	April 2022
Completion:	October 2023
Building owner:	Gemeinde Markelfingen
Architect / Planner:	Steimle Architekten
Timber construction company:	Fluck Holzbau GmbH

MATERIAL

380 m³ **MM masterline**
 (28,5 m³ **MM masterline** as columns, 315,15 m³ **MM masterline** for the roof construction)

Markolfhalle Markelfingen | DE



FACTS

Start of planning:

January 2019

Start of construction:

October 2019

Completion:

May 2021

Building owner:

Marktgemeinde Thalgau

Architect / Planner:

sps architekten zt gmbh

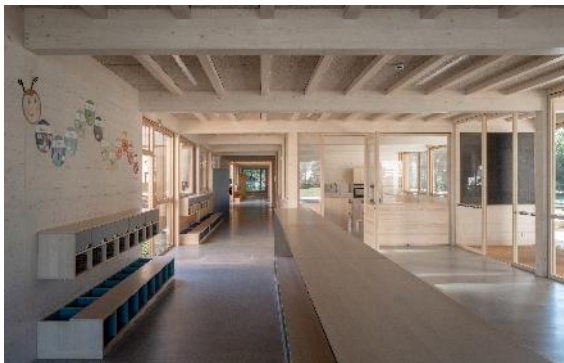
Timber construction company:

Winkler Holzbau

MATERIAL

300 m³ MM crosslam

Fire station Unterdorf Thalgau | AT



FACTS

Start of planning:

November 2022

Completion:

September 2023

Architect / Planner:

Hohengasser Wirnsberger Architekten

Timber construction company:

Strobl Bau Holzbau GmbH

MATERIAL

200 m³ **MM crosslam**

Kindergarten Mühlal Leoben | AT



FACTS

Start of planning work: April 2024
Completion: Juni 2024
Building owner: Elisabethinen Graz
Architect: Edgar Hammerl Architektur ZT GmbH
Structural planning: KPZT Tragwerksplanung
Wood construction company: Strobl Bau – Holzbau GmbH

MATERIAL

1.650 m³ MM crosslam



Hospital Elisabethinen Graz | AT



FACTS

Start of construction:	February 2023
Completion:	End of 2024
Building owner:	MIC Linz
Architect / Planner:	Jürgen Holler (Design)
Timber construction company:	Swietelsky AG

MATERIAL

555 m² **MM crosslam**
 72 m³ **MM masterline**
 3.950 m² **XC®**-office ceiling elements

MIC Company headquarter
Linz | AT



MAYR-MELNHOF HOLZ HOLDING AG

WHERE
IDEAS
CAN
GROW.

www.mm-holz.com