



**MAYR-MELNHOF HOLZ HOLDING AG**

WHERE  
IDEAS  
CAN  
GROW.

[www.mm-holz.com](http://www.mm-holz.com)

# INTEGRATED VALUE CREATION



FOREST



TIMBER



SYSTEMS

WHERE  
IDEAS CAN  
GROW.




WOOD.



IS SUSTAINABLE.

# GROUP STRUCTURE



-  Headquarters
-  Subsidiary
-  Joint Ventures



# LOCATIONS



**Bergkvist Siljan Mora\***  
Sawmill

\*Production until the end of 2025



**Bergkvist Siljan Blyberg**  
Sawmill



**Bergkvist Siljan Insjön**  
Sawmill



**Mayr-Melnhof Holz Wismar**  
Timber processing



**Mayr-Melnhof Holz Paskov**  
Sawmill, Pellets production



**Mayr-Melnhof Holz Olsberg**  
Timber processing



**Mayr-Melnhof Holz Reutte**  
Timber processing , Pellets production



**Mayr-Melnhof Holz Gaißhorn am See**  
Timber processing



**Mayr-Melnhof Holz Leoben**  
Sawmill, Pellets production,  
Timber processing



# HISTORY



1872

1951

2001

2004

2007

Birth of  
Mayr-Melnhof's  
timber activities

Concentration of  
saw milling  
activities in  
Leoben (AT)

Acquisition of the  
laminated beams  
manufacturer  
Systemholz AG,  
today part of  
Mayr-Melnhof Holz  
Gaishorn (AT)

Initial operation of  
the sawmill  
Mayr-Melnhof Holz  
Paskov (CZ)

Initial operation of  
the pellet plant in  
in Paskov (CZ)

# HISTORY



2008

2009

2012

2015/2016

2017

Acquisition of the Stallinger/Kaufmann Group, today Mayr-Melnhof Holz Reuthe (AT)

Initial operation of cross laminated timber production in Gaishorn (AT)

Initial operation of the sawmill Mayr-Melnhof Holz Efimovskij (RU)

Acquisition of the pellet plant in Leoben (AT)

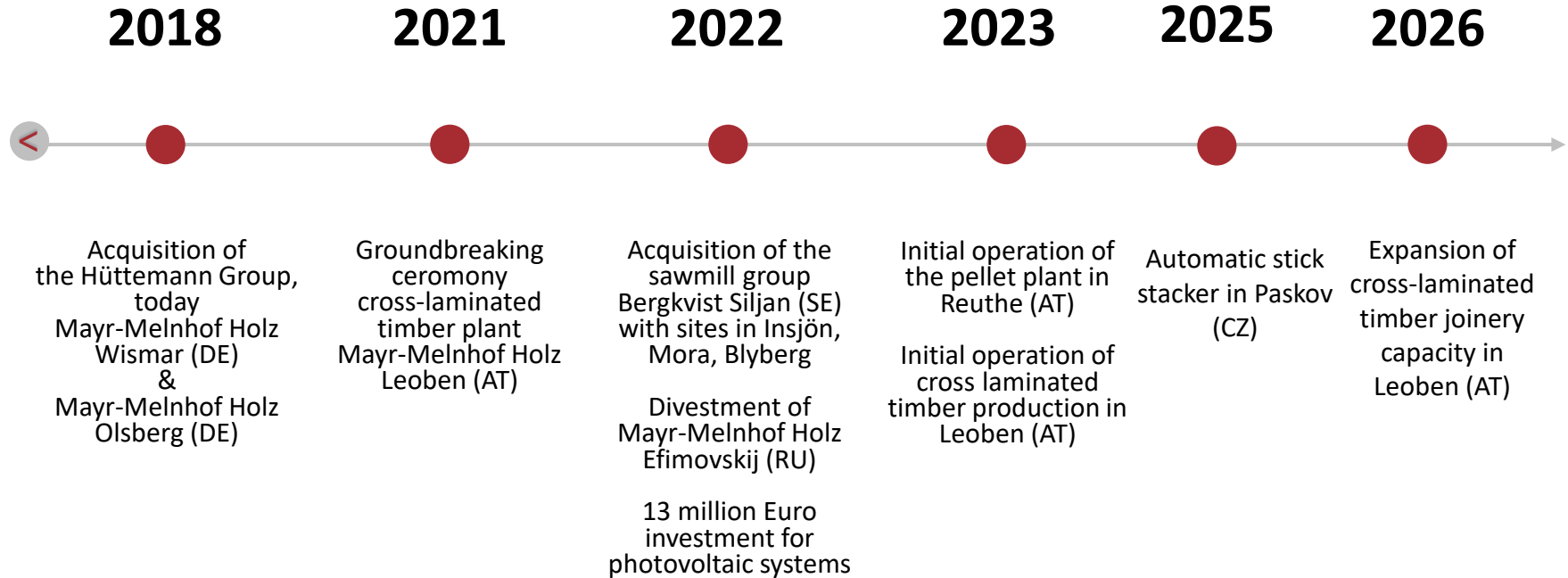
Acquisition of the combined heat and power plant in Leoben (AT)

Doubling of the cross-laminated timber capacities in Gaishorn (AT)

40 million Euro investment at the core locations

Initial operation of the pellet plant in Efimovskij (RU)

# HISTORY



**PEFC-CERTIFIED**



**PEFC**

PEFC/06-38-79

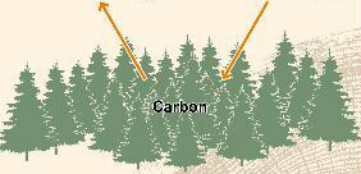


[www.mm-holz.com](http://www.mm-holz.com)

SOLAR ENERGY



Oxygen (O<sub>2</sub>)    Carbon dioxide (CO<sub>2</sub>)



Carbon

Sustainably managed forestry  
in sawmill catchment areas



SAWMILLS

Carbon remains permanently  
bound in wood and wood products



100%  
UTILISATION OF  
RAW MATERIAL



MM sawn timber

SAWDUST

CROSS-LAMINATED  
TIMBER  
MM crosslam



TIMBER CONCRETE  
COMPOSITE ELEMENT by HMC



WOOD PROCESSING

GLUED LAMINATED  
TIMBER  
MM masterline



ENGINEERED GLULAM  
FLOOR & WALL BEAMS  
CEILING ELEMENTS

MM blockdeck

FORMWORK  
BEAMS &  
PANELS  
HT 20plus



K1 yellowplan



MM vista line



MM HBE

MM profideck

BIOENERGY

PELLET PRODUCTION  
MM royalpellets



TIMBER ENGINEERING &  
TURN-KEY CONSTRUCTION  
MM complete  
by HUTEMANN

BARK

BIOMASS POWER STATIONS

Heat & Green Energy

Energy supply for our 100% self-sufficient sawmills

WOOD CHIPS

Pulp and Paper Industry

Public energy grids

RECYCLING, REUSE

WHERE  
IDEAS  
CAN  
GROW.



## PRODUCTS

- MM sawn timber
- Glulam beams **MM masterline**
- Glulam duo- & trio beams **MM vistaline**
- Glulam ceiling elements **MM profideck**
- Glulam floor and wall beams **MM blockdeck**
- Glulam house building element **MM HBE**
- Cross-laminated timber **MM crosslam**
- Timber-concrete composite element **XC®** by **MMK**
- Timber engineering & turn-key construction **MMcomplete** by **Hüttemann**
- Formwork panel **K1 yellowplan**
- Formwork beams **HT 20plus**
- Pellets **MM royalpellets**

### Chain of Custody



## Worldwide Sales

### MM-TEAM OF EXPERTS & DISTRIBUTION PARTNERS

RAW MATERIAL

## Spruce & pine

(fir, larch) from sustainably managed forests



Foundation **1872**

**Headquarters**  
 Mayr-Melnhof Holz Holding AG  
**LEOBEN | AT**

**Owner**  
 Franz-Mayr-Melnhof-Saurau  
 Industrie Holding GmbH

**1695**  
EMPLOYEES

88.7 % male  
 11.3 % female  
 thereof 2.4 % apprentices



**5** Saw mills

- Leoben | AT
  - Insjön | SE
  - Mora\* | SE
  - Paskov | CZ
  - Blyberg | SE
- \* Product on until the end of 2024

**2.95 mio** cubic meters of log input

**1.73 mio** cubic meters of sawn timber

**214,000** tons of pellets

**5** Timber processing plants

- Gaishorn | AT
- Reuthe | AT
- Leoben | AT
- Wismar | DE
- Olsberg | DE

**26 %** Timber processing rate

**545,800** cubic meters of timber processing products

2025 TURNOVER

**€ 875 MIO**  
 15 MIO INVESTMENT

# PRODUCT PORTFOLIO & PRODUCTION 2025



**1,730,000 m<sup>3</sup>**  
**MM sawn timber**

**MM masterline**  
Glulam beams



**MM blockdeck**  
Floor and wall beams

**MM profideck**  
Laminated ceiling elements



**120,000 m<sup>3</sup>**  
**MM crosslam**  
Cross-laminated timber



**335,000 m<sup>3</sup>**



**1,400,000 m<sup>2</sup>**  
**K1 yellowplan**  
Formwork panels

**HT 20plus**  
Formwork beams



**5,500,000 lfm**



**MM vistaline**  
Duo- & Trio beams



**MM HBE**  
Glulam house building elements



**214,000 t**  
**MM royalpellets**



**REFERENCES**

WHERE  
IDEAS  
CAN  
GROW.



#### FACTS

<b>Start of planning:</b>	October 2019
<b>Start of construction:</b>	May 2021
<b>Completion:</b>	End of 2023
<b>Building owner:</b>	Mayr-Melnhof Holz Leoben
<b>Architect / Planner:</b>	Warnecke Engineering, arinco planungs + consulting gmbh
<b>Timber construction company:</b>	Strobl Bau – Holzbau GmbH

#### MATERIAL

11.500 m<sup>3</sup> **MM crosslam**, **MM multiplan**,  
**MM masterline** and **MM masterline** engineered glulam

## Cross-laminated timber plant Leoben | AT



#### FACTS

**Start of planning:**

December 2021

**Start of construction:**

April 2022

**Completion:**

October 2023

**Building owner:**

Gemeinde Markelfingen

**Architect / Planner:**

Steimle Architekten

**Timber construction company:**

Fluck Holzbau GmbH

#### MATERIAL

380 m<sup>3</sup> **MM masterline**

(28,5 m<sup>3</sup> **MM masterline** as columns, 315,15 m<sup>3</sup> **MM masterline** for the roof construction)

## Markolfhalle Markelfingen | DE



#### FACTS

**Start of planning:**

January 2019

**Start of construction:**

October 2019

**Completion:**

May 2021

**Building owner:**

Marktgemeinde Thalgau

**Architect / Planner:**

sps architekten zt gmbh

**Timber construction company:**

Winkler Holzbau

#### MATERIAL

300 m<sup>3</sup> MM crosslam

## Fire station Unterdorf Thalgau | AT



#### FACTS

**Start of planning:**

November 2022

**Completion:**

September 2023

**Architect / Planner:**

Hohengasser Wirnsberger Architekten

**Timber construction company:**

Strobl Bau Holzbau GmbH

#### MATERIAL

200 m<sup>3</sup> **MM crosslam**

## Kindergarten Mühltaal Leoben | AT



### FACTS

**Start of planning work:** April 2024  
**Completion:** Juni 2024  
**Building owner:** Elisabethinen Graz  
**Architect:** Edgar Hammerl Architektur ZT GmbH  
**Structural planning:** KPZT Tragwerksplanung  
**Wood construction company:** Strobl Bau – Holzbau GmbH

### MATERIAL

1.650 m<sup>3</sup> MM crosslam



## Hospital Elisabethinen Graz | AT



### FACTS

<b>Start of construction:</b>	February 2023
<b>Completion:</b>	End of 2024
<b>Building owner:</b>	MIC Linz
<b>Architect / Planner:</b>	Jürgen Holler (Design)
<b>Timber construction company:</b>	Swietelsky AG

### MATERIAL

555 m<sup>2</sup> **MM crosslam**  
 72 m<sup>3</sup> **MM masterline**  
 3.950 m<sup>2</sup> **XC®**-office ceiling elements

**MIC Company headquarter**  
**Linz | AT**



**MAYR-MELNHOF HOLZ HOLDING AG**

WHERE  
IDEAS  
CAN  
GROW.

[www.mm-holz.com](http://www.mm-holz.com)